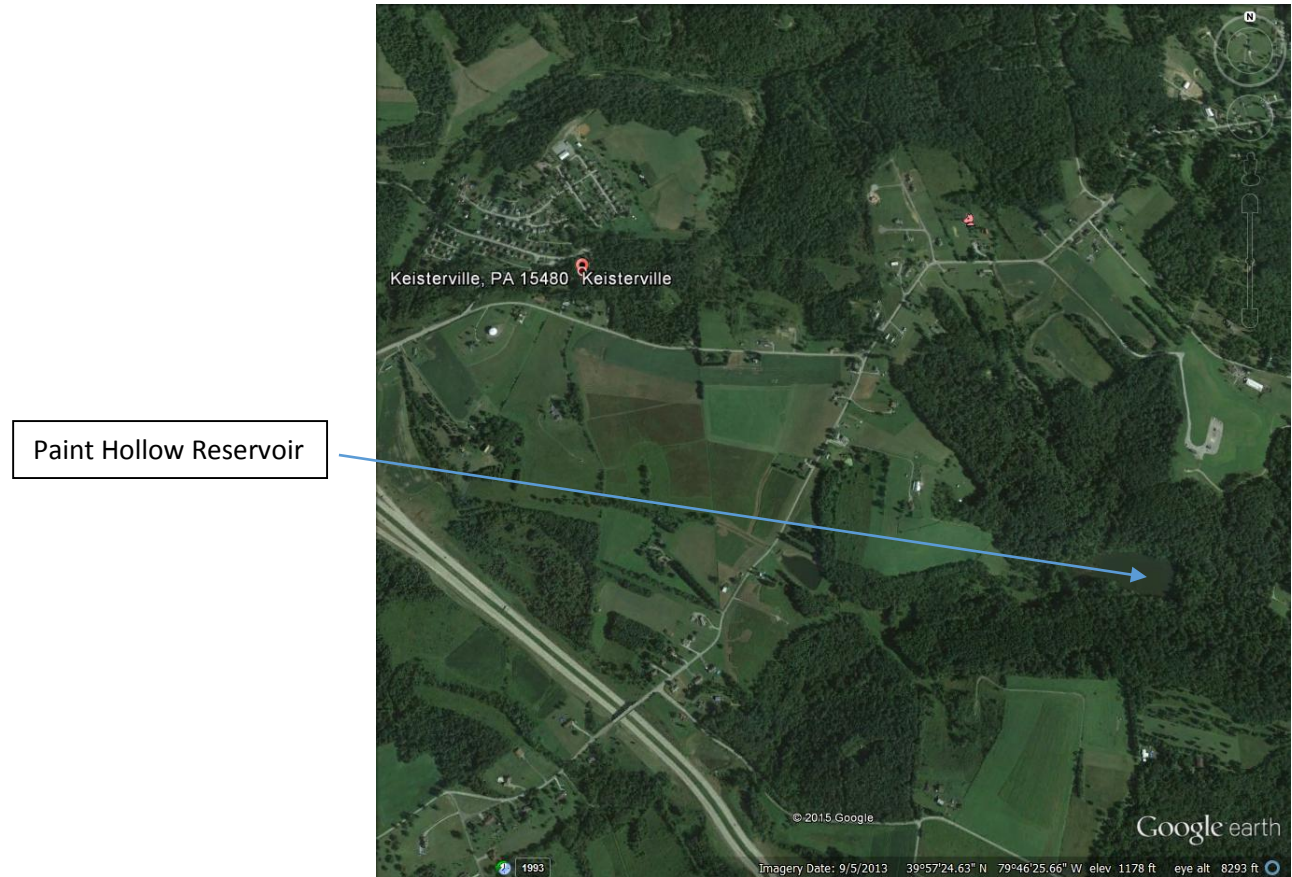


Paint Hollow Reservoir and Cabin

(Photos with PB came from Pat Hoover Bishop's collection. Their ages distinguish Nana, grandmother Leichliter, and Nana her daughter.)

It's hard for us today to conceive of how polluted Keisterville was when the mine and beehive coke ovens were operating. Superintendent Braden's family was fortunate to have nearby getaway spot, Paint Hollow Reservoir and cabin. Although the roads and houses have changed since the 1930-40's the Google Earth photo shows the locations of Keisterville and Paint Hollow. The dam was breached sometime in the late 1950's, but it has been rebuilt. A pipeline ran from the reservoir to Keisterville.



Although there were wells at the plant to provide potable water, they didn't provide adequate ab adequate. The largest need was for quenching the coke as it was removed from the ovens. (Thanks to Van, Sr. Bill Hoover did this for a summer job at the Clairton works of US Steel.) The coke is red hot as it comes out of the ovens and will continue to burn if not quenched. The coke will be ignited again in [blast furnaces](#) to produce iron.



Two photos of the reservoir and cabin. PB



Closer view of the cabin. The boat was extensively put to use since there apparently wasn't a beach and such. PB



Edith Lechliter Hoover lounging by the water. The breastwork of the dam is in the background. PB



Fishing was another activity at the reservoir. This photo of Braden and Nana proudly showing off their catch may have been at the reservoir. PB Nana rowed while Braden fished. No doubt she cleaned and cooked them as well.



Nana (grandmother Leichliter) fishing with Patsy Hoover (pole in hand) and Becky Hoover on the breastwork of the dam. NB



Left to right: Gene, Sally and Nana posing for the camera. PB There were no bikinis in those days.



Left to right: Edith, Rita and Theresa Mullen. PB



Patsy Hoover is on the bottom step in front of her mother, Edith. David Stiller is looking through the railing. Above from left to right are Helen Rogers Lechlitter, Van's wife, Nana, Sally and Gene.



Nana holding David Stiller in rocking chair. Sally is in the middle. Woman on right is probably Theresa Mullen. PB



Brad on the porch at the cabin. PB

