

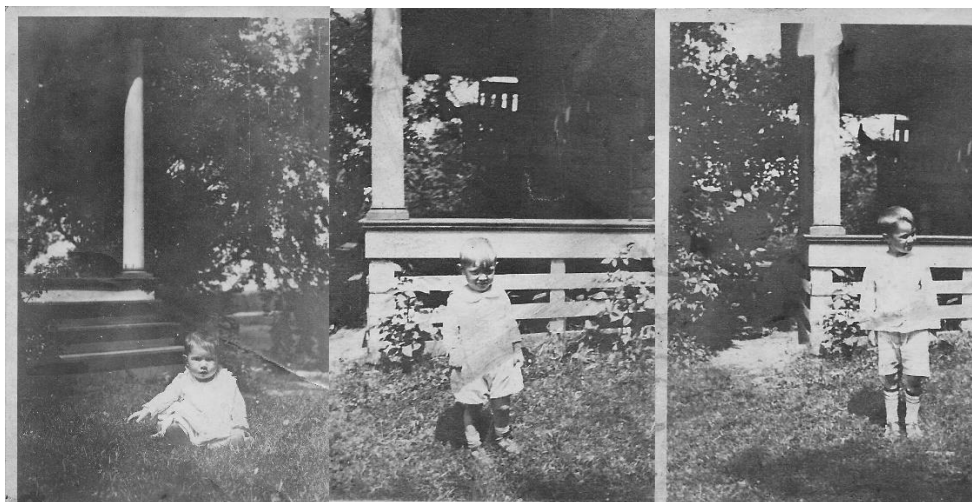
**BRADEN BOYD LEICHLITER, JR.**

**Nicknames: Brad and BB**

**Photos compiled and captioned by Brad's nephew by his sister Edith Leichliter Hoover, William (Bill) Leichliter Hoover. Photos from Brad's personal collection are identified by BB in the captions, those from Braden and Nana's home in Keisterville are identified as BN, and other sources, as noted.**



**Brad about 2 years old, probably at Paint Hollow Reservoir, the source of water for the Keisterville plant of Lincoln Coal and Coke. BB**



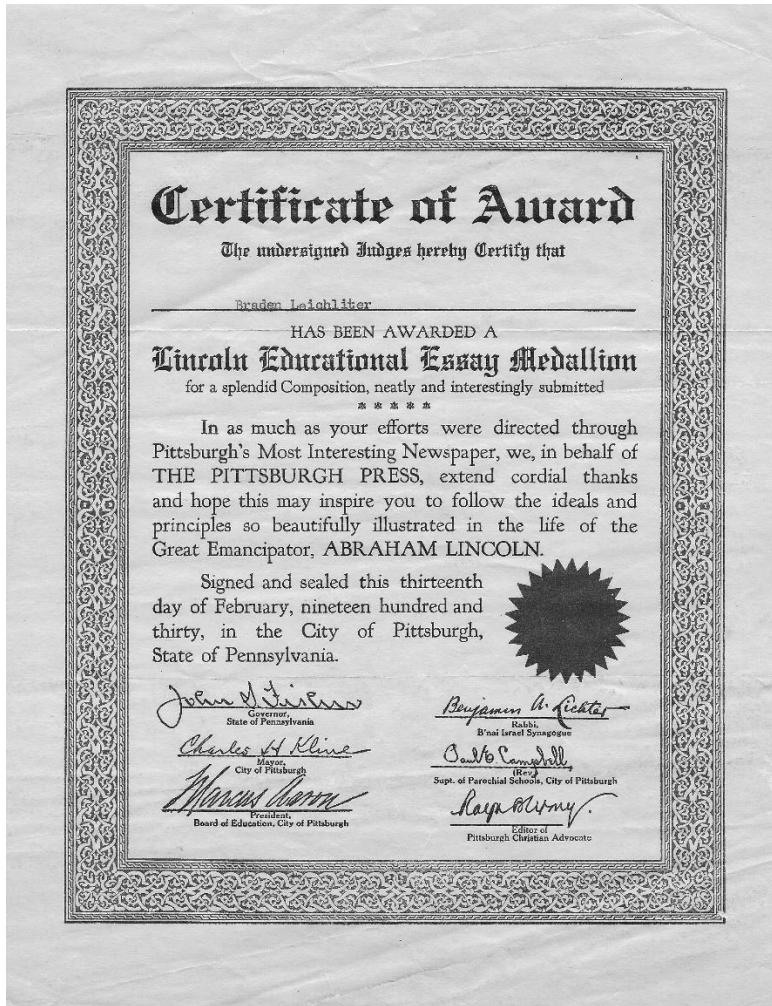
**Brad as a baby and young boy. BN**



**Brad developed an interest in farming at an early age, probably at his grandfather Levi's home. BN**



**Brad's High School photo. His appearance changed significantly as he matured. Note the hat on the stand. He always was covered (military term for wearing a hat). BB**



Braden wrote an essay on President Lincoln for a writing contest administered by The Pittsburgh Press newspaper. The significance of the Medallion award is unknown, but it was significant to Brad since he retained it for life. It also implies that Braden's household received this newspaper. BB

COMMONWEALTH OF PENNSYLVANIA



DEPARTMENT OF PUBLIC INSTRUCTION

SERIES 1925  
NO. 4-15665

CERTIFICATE OF PERFECT ATTENDANCE

This is to certify that JUNIOR LEICHLITER, a pupil in the public schools of the Commonwealth of Pennsylvania, in accordance with a statement filed by the teacher with the Bureau of Attendance, Department of Public Instruction, has been neither absent nor tardy during the school year certified below by the seal of the Department of Public Instruction.



*John A. Canoll*

Superintendent of Schools

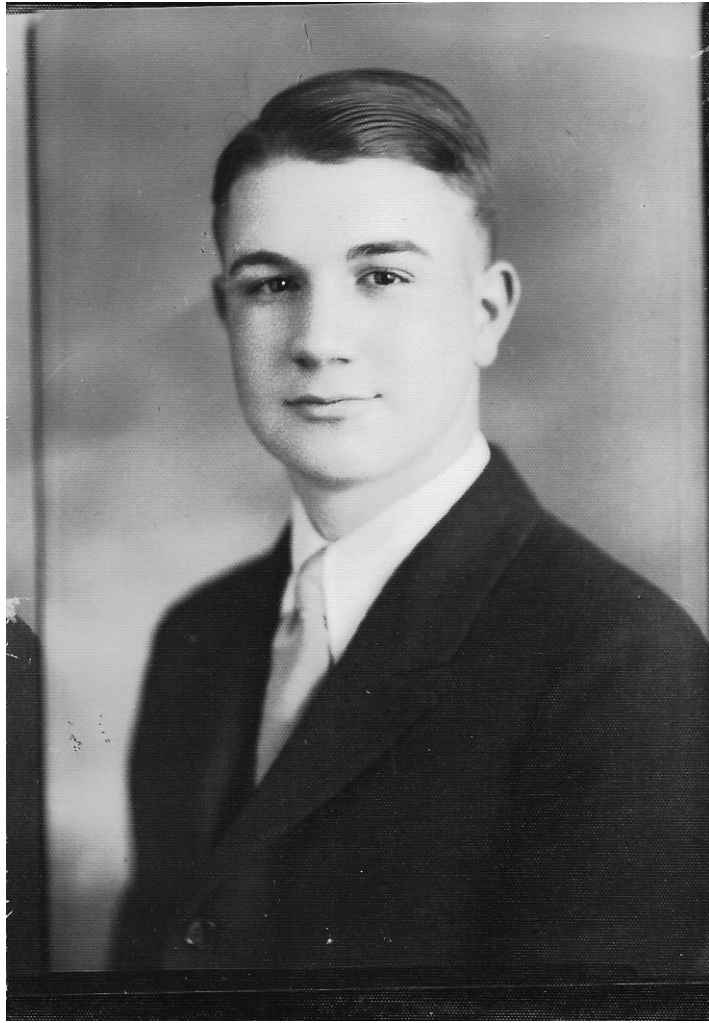
*J. George Decht*

Superintendent of Public Instruction

Brad achieved perfect attendance in 1925, 1927 and 1930 while attending junior and senior high school in Uniontown. This is no small achievement considering the trip from Keisterville to Uniontown. He most likely used the public bus service between Uniontown and Keisterville. There was train service to Keisterville but its primary purpose was to haul coke to the main line of the Pennsylvania Railroad along the Monongahela River, most likely at Brownsville. Edith said that she took the train from Keisterville to college in Indiana, Pa. BB



Horses were still a common mode of transportation while Brad was going up in Keisterville. These photos show Brad riding a riding horse in Keisterville. The bottom photo shows the row of houses where management personnel lived. The Leichliter house is third from the left. The horse is standing on the road to the barn and company office. BB



**Brad's high school graduation photo, 1931. BB**

1931

UNIONTOWN . SENIOR . HIGH . SCHOOL

WALTON A. LAURENCESON Commercial

Larry

He was born a King!  
Class Play IV; Ass't. Circulation Manager,  
Senior High News III; Circulation Man-  
ager IV; Operetta II, III, IV; Glee Club  
II, III, IV; Student Senate II, III, IV;  
Class Usher II; H-Y II, III, IV; Pres.  
Commercial Club IV; Interclass Basket-  
ball II, III, IV.



PLAYFORD LANDMAN General

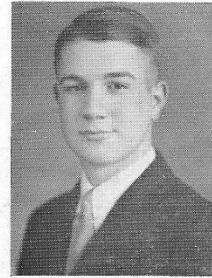
Ford

Strong silent men are the ones who  
achieve wonders.

BRADEN B. LEICHLITER Classical

Braden

Live and think.



ANTHONY LAPENTA Technical

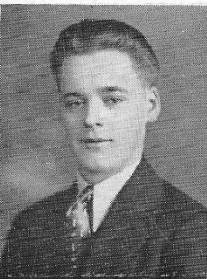
Tony

One who never turned his back  
But marched face forward.  
Football III, IV; Radio Club IV.

MARION R. LEONELL Commercial

Skinny

Life is made for jollity,  
For fun, and for frivolity.  
Dramatic Club II, III, IV; Glee Club III, IV;  
Commercial Club IV; Class Play IV;  
Operetta III, IV.



DON LAUGHEAD General

Don

I love art for art's sake.  
Commercial Art II, III; Aviation Club IV;  
Electric Club IV.

ANN LOGAN Commercial

Rusty

Her friends are many, her foes—are  
there any?  
Dramatic Club II, IV; Glee Club II; Stamp  
and Coin Club II.



Page from Uniontown High School 1931 graduation edition of school newspaper. It lists no activities for him, but being in the Classical Program he was preparing for college. More significantly, Brad was struck with epilepsy at age 16. The first incident occurred at home with just his younger sisters present. BB



**Mont Alto Forest Academy, Mont Alto, PA. Class photo. Brad is in middle of last row, standing tall in dark suit. Weistling Hall is in the background. The oak tree on the right was still there in 1962-63 when Bill Hoover attended. BB See <http://montalto.psu.edu/Information/ourhist.htm> for the history of the Academy.**

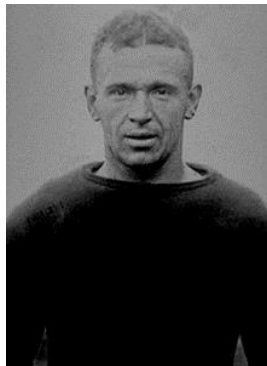


**Brad on steps of Conklin Hall, the dormitory at Mont Alto Forest Academy. Mont Alto is in the mountains of south-central Pennsylvania. The Forest Academy was the site of an iron smelter. Water was diverted upstream of campus and channeled into the smelter and then to a series of waterfalls in front of Conklin Hall and into a trout pond. It flowed down a series of manmade falls and into a trout pond. BB By the time Brad attended the Forest Academy it provided only the first year of the forestry program. Students transferred to the main campus to complete their degrees.**

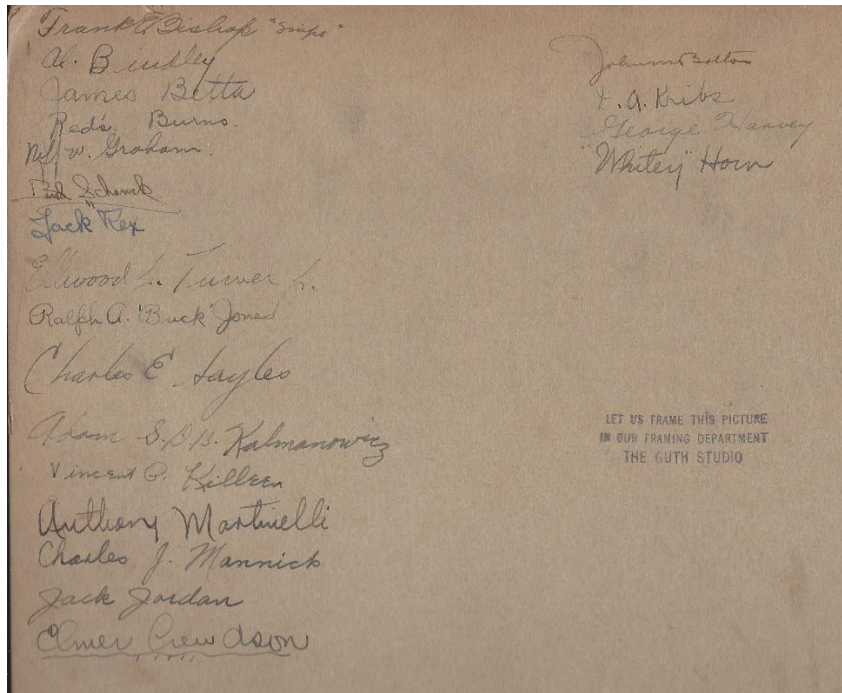




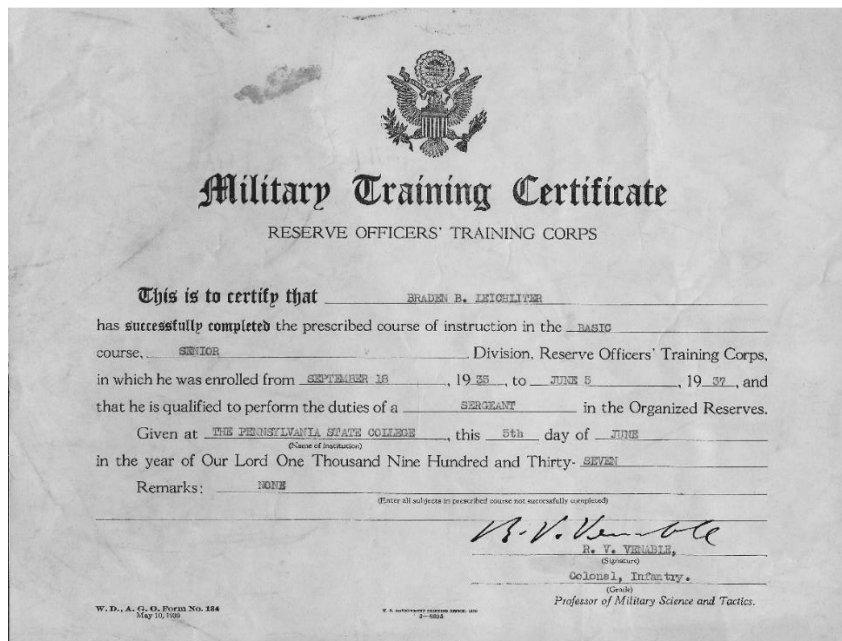
**This photo of a Penn State football team appears to be in front of Old Main, the administrative building. Brad is second from the left, third row from the bottom row. The coach while Brad was at Penn State was Bob Higgins, shown below. BB**



**Robert A. Higgins, Head Coach, Penn State Football, 1930 to 1949. Source: [http://en.wikipedia.org/wiki/Bob\\_Higgins\\_\(American\\_football\)](http://en.wikipedia.org/wiki/Bob_Higgins_(American_football))**



Some of the football players signed the back of Brad's copy of the team photo. Not all signed it and signatures don't appear to be in order. BB



Enrollment in Reserve Officer Training Corps (ROTC) was required for all able bodied men enrolled in Land Grant Institutions such as Penn State. This certificate verifies that Brad was at Penn State from at least 1935 to 1937 and completed an ROTC program. It's not known what the designation as sergeant means. Perhaps it reflects that Brad had to leave before graduating. Graduates were commissioned as 2<sup>nd</sup> Lieutenants. BB



**Brad's fraternity at Penn State. In the top photo, as usual, Bard is in the middle of the back row. BB**

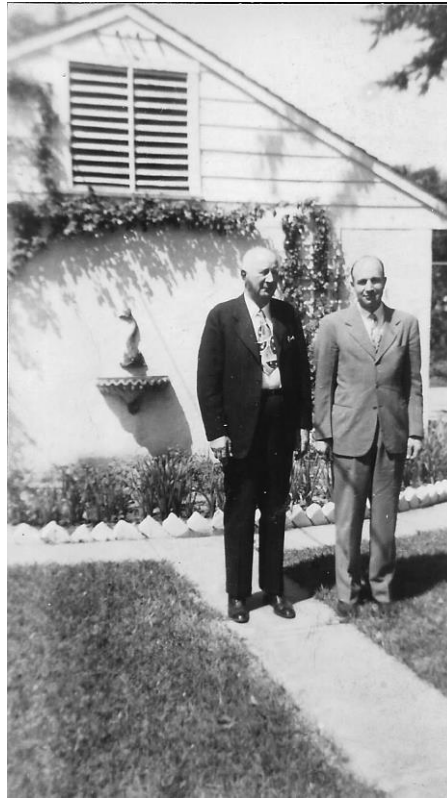


**Brad with his best friends, from left, Milt Bush, Brad and Tok Bennett. Based on Brad's hairline this was taken about the time they were in college. Source: BN**



**Brad and David E. Bennett (Tookie in high school, Tok among family) at State College, Penn State. Source: BN.**

Brad left Penn State before graduating for unknown health reasons. After working in Keisterville for a while he went to work for his uncle Otto Gay Lechliter, OG. At this time Gay, or OG, was an executive with Mudge Oil in west Texas. Brad started at the bottom as a roustabout. Working for Mudge Oil introduced Brad to the science of seismology and employment with [Geotech Instruments](#).



**Brad and his Uncle Otto Gay Lechliter at Otto Gay's home at 4400 Beverly Drive, Dallas Texas. Source: BB**

One of Brad's assignment with Geotech in the 1950's was to manage a seismic monitoring station located in the Sierra Madre Mountains in southeastern Wyoming. This was under a US Air Force contract to detect atomic tests by the USSR. Brad lived in Laramie, WY (the song "The Man From Laramie" was popular at this time). The monitoring station was in Encampment, WY. To get there Brad had to cross over the Snowy Mountains west of Laramie. The road was closed for much of the year, requiring a much longer drive into Colorado and back north to Riverside and Encampment.

Bill Hoover was very familiar with this territory, including Encampment, because as fate would have it, while in forestry school at Penn State Bill took a summer job with the U.S. Forest, Medicine Bow National Forest, Encampment District, Encampment, WY. This was well after Brad returned to Geotech headquarters in Dallas. Upon returning home to California, Pa he accompanied mother to Keisterville to see his grandmother, Nana. Bill took the opportunity to look through the drawer of pictures at Nana's. He came across a picture of the Cowboy Bar. Bill was very familiar with this establishment because he celebrated his 21<sup>st</sup> birthday there. It was the only "watering hole" in town. The next time Brad came to Nana's Bill showed Brad the photo below, stating that he knew where this was. He also stated that he assumed Brad must have had something to do with the US Air Force building located behind the Ranger Station. All the locals knew was that there was a cable running from the Air Force building up into the mountains. True to his oath of secrecy Brad said nothing, but did express a slight grin. The Cowboy Bar burned to the ground the year after Bill was in Encampment.



**Cowboy Bar, Encampment, WY, circa. 1951. The only thing missing is the hitching post for horses.  
Population was 311. BB**



**Hotel in Encampment, WY. It's likely that Brad was a regular guest. BB**



**View of seismic station in mountain valley west of Encampment Wyoming. BB**



**View of Encampment, WY from the mountain to the west. Medicine Bow Mountain is in the distance. BB**



**The mountain where the seismograph was located received a great amount of snow, requiring 4x4's and horses for access from Encampment. BB**



**Appears that Brad tried skis to move around the monitoring site. After leaving Laramie he gave Bill Hoover the parka he's wearing. BB**



**Brad at Lake Marie, Snowy Range west of Laramie on road over the Snowy Mountains to Saratoga and Encampment, WY. BB**



**Encampment lies in the Saratoga Valley between the Sierra Madre and Snowy Range Mountains. The rolling valley land is dry rangeland with irrigated forage produced along the rivers. The photo on the right has small specs in the middle. These are pronghorn antelope. Much of the land is open range, i.e. not entirely fenced with grates where roads cross fence lines. Drivers must watch for cattle on roadways. BB**



**There are beautiful rock formations on the east side of the Saratoga Valley cut by the North Platte River. The natural bridge on the right is apparently located there, but is unknown to Bill Hoover. BB**





**Brad was an avid fisherman. In Wyoming he fished the lakes in the Snowy Range. In this picture he's fishing in a canal carry water from the mountains to the valley for irrigation. BB**

Brad was the favorite uncle of his many nieces and nephews. His photo collection included many of his younger brother Franklin (Pete), his wife Rita, and their children. It also included many photos of Otto Gay's children and grandchildren. Brad loved his nieces and nephews. He always interacted with them with a smile on his face and a sincere interest in their lives. Pete and Rita also had a great affection for Brad, reflected in the name of their youngest child, Braden Boyd Leichliter, III. (Need to confirm full name.)



**Brad with Petey and Ann Lynn Leichliter, Pete's and Rita's oldest children. BB**



Official company photo of Brad. PB



Aaron Hoover, husband of Brad's sister Edith, visited him in September 1952. Aaron took these photos of Brad in the Snowy Range. Most of the range is part of the Medicine Bow National Forest. The Oldsmobile Brad's leaning against is the car many most associated with him. In Dallas he drove a well-worn VW Beetle.



Brad with his great nieces and nephews at 1979 reunion, Clearfield, PA. He had a natural affinity for children and they returned it in kind. PB





Brad and Mary Ellen's wedding in Dallas, Texas.



Best Man Ed Landrum and Mary Ellen's daughter Lynn.



You are beloved BB. We miss you very much.  
We pray that it will be possible to explain to our children and grandchildren why this is so.



Brad's wife Mary Ellen and her sister owned a ranch near De Queen, Arkansas. It's in the southwest corner of the state, not far from Dallas, TX. They raised cattle on the ranch. Here Aaron Hoover, Edith Leichliter Hoover, Mary Ellen Leichliter and Brad Leichliter are touring the ranch.



**Braden Boyd Leichter III, youngest son of Pete and Rita Leichter, 1967. BB**



**Brad lives on in the memories of his many nieces and nephews. His niece Kitty (Nana Gene) Sample Long Day sees Brad in the face of her son Peter Long. Peter bears a striking resemblance to Brad. Kitty is the daughter of Gene Sample Vail, Brad's sister. This photo shows Peter and Sara at their wedding. PB**